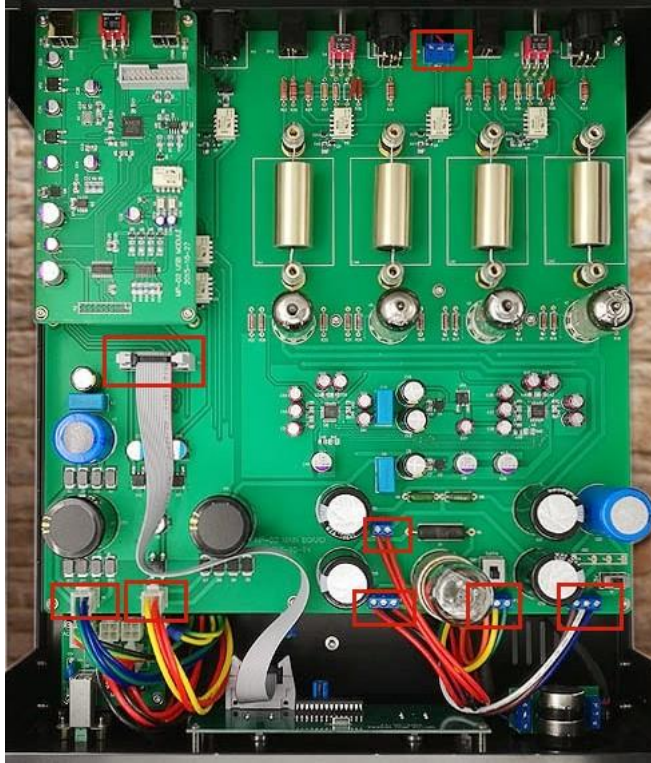
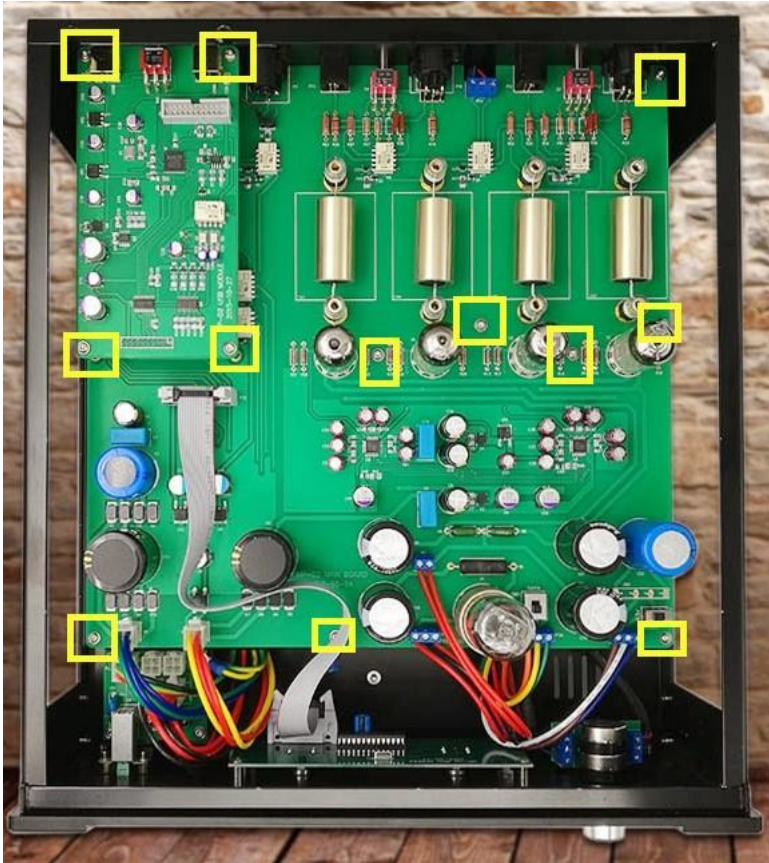


MP-D2 MOTHERBOARD UPGRADE GUIDE V2.0

1. To be safe, please label all wires with marked stickers, and then take out these wires.



2. Remove screws, posts and unplug USB module.



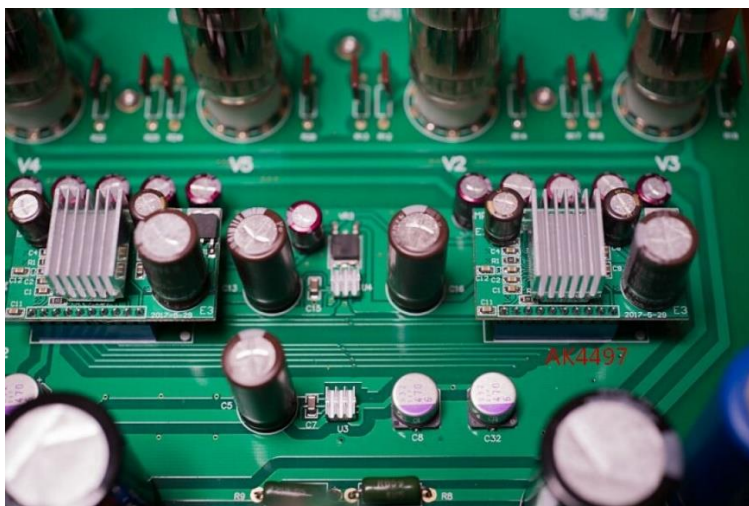
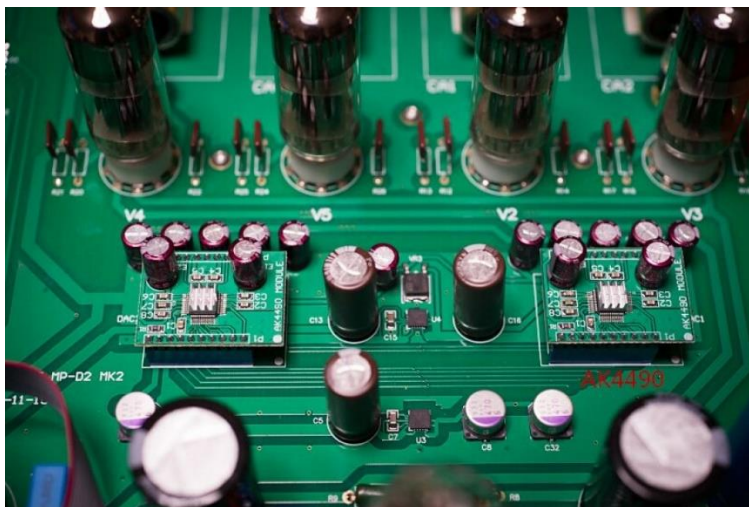
3. Remove 7 screws and gold plated RCA terminal nuts on the back.



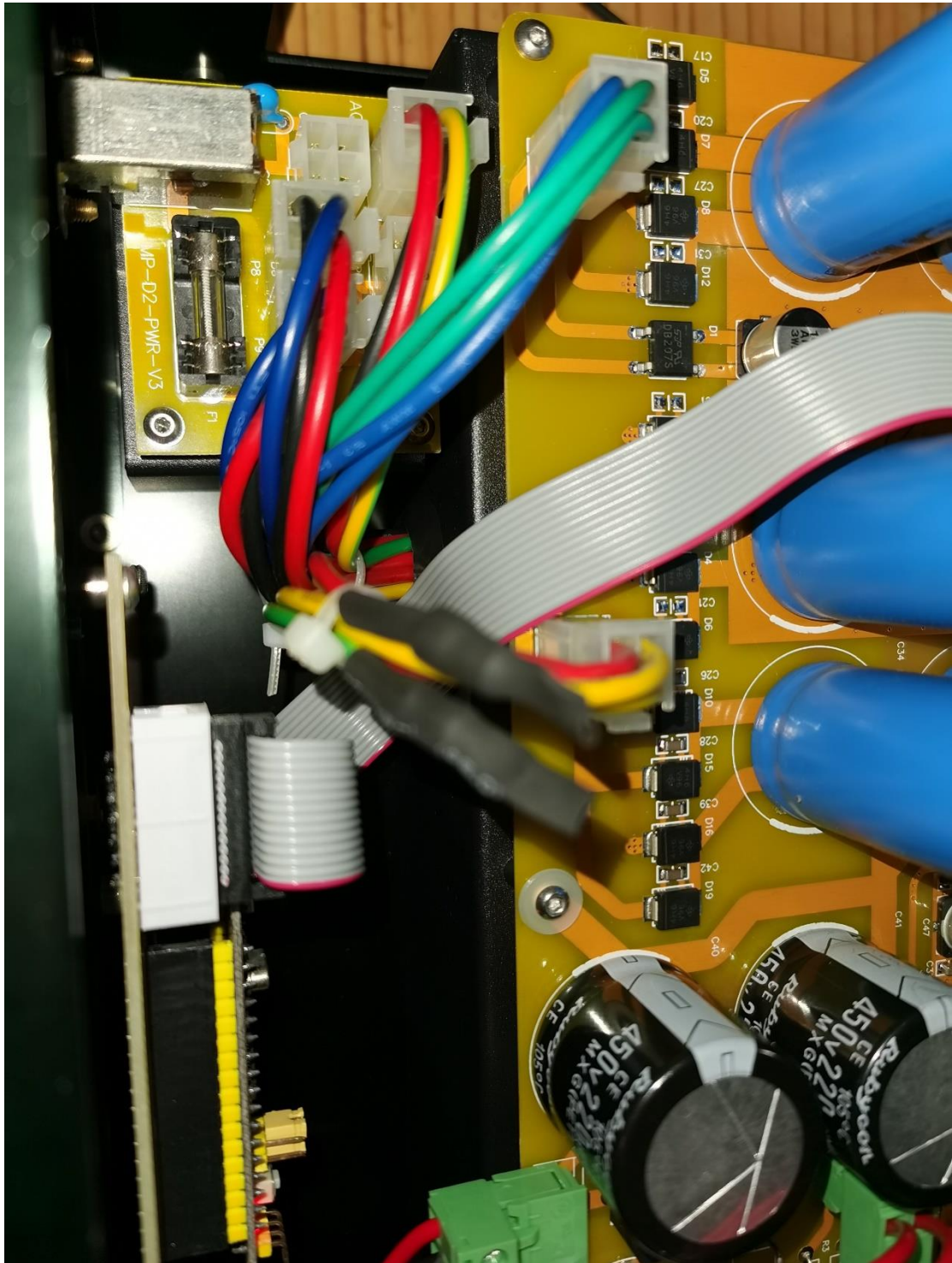
4. Now you can take out the motherboard. Please only hold the edge of the motherboard, don't touch circuit traces and components to avoid electrical shocks since some capacitors may still hold some charge. Remove four coupling caps, unplug all the tubes and DAC modules. Don't touch the leads of the coupling caps, only hold their bodies.



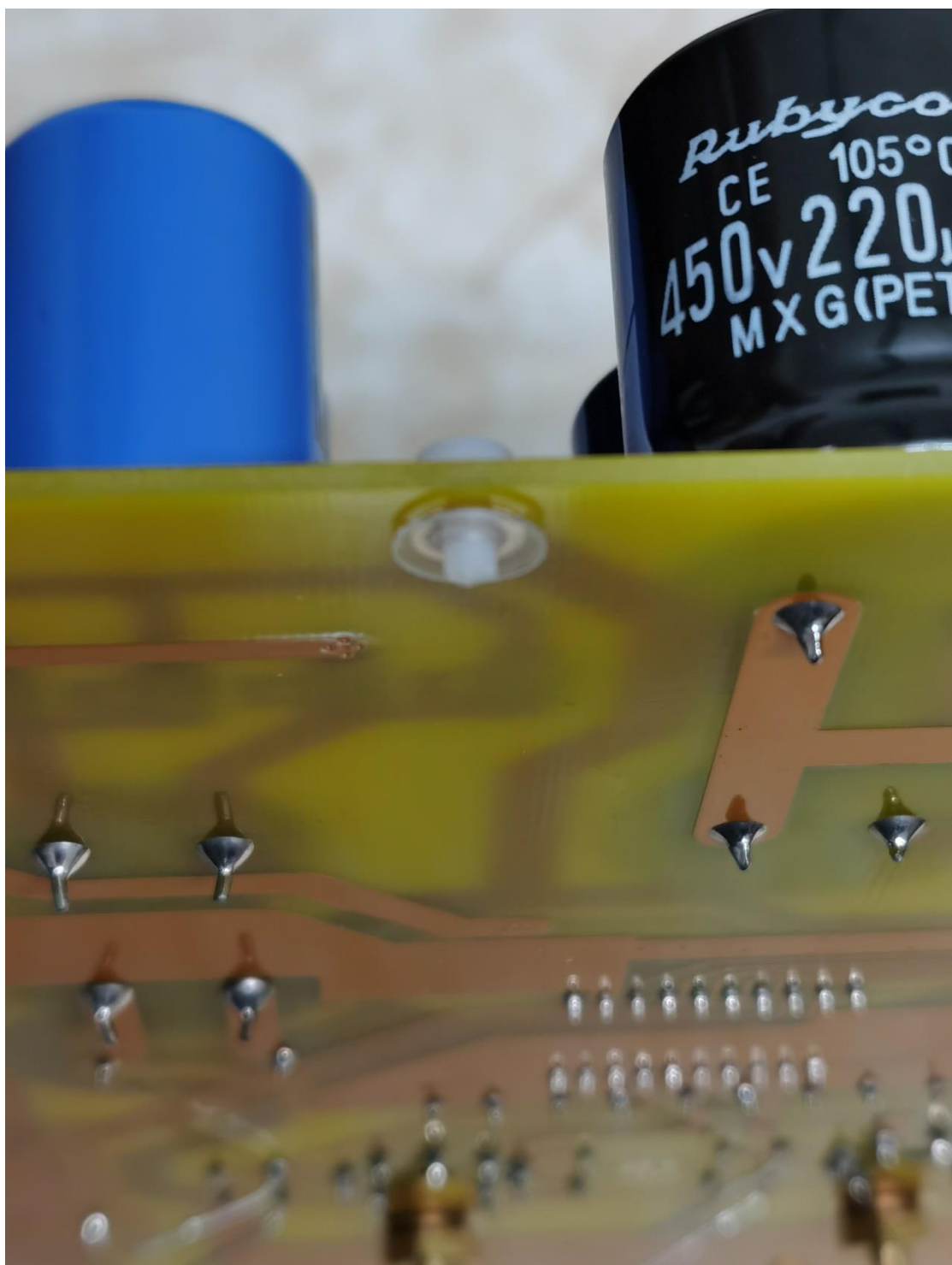
5. Install the coupling capacitors to the new motherboard. Don't touch the leads of the coupling caps, only hold their bodies. Plug in DAC modules very carefully. Please make sure the orientations of the DAC modules are correct. Also, double check, make sure all the pins go into the sockets. No any sticking out pin(s). Failing to do so can kill the DAC module(s) once powered on.



6. Put the new motherboard back to the case. Connect all the wires according to the above pictures and your label stickers. Don't connect the two "Yellow-Green" wires which were connected to either the power switch board or motherboard. Insulate them by tape or heat shrink tube.

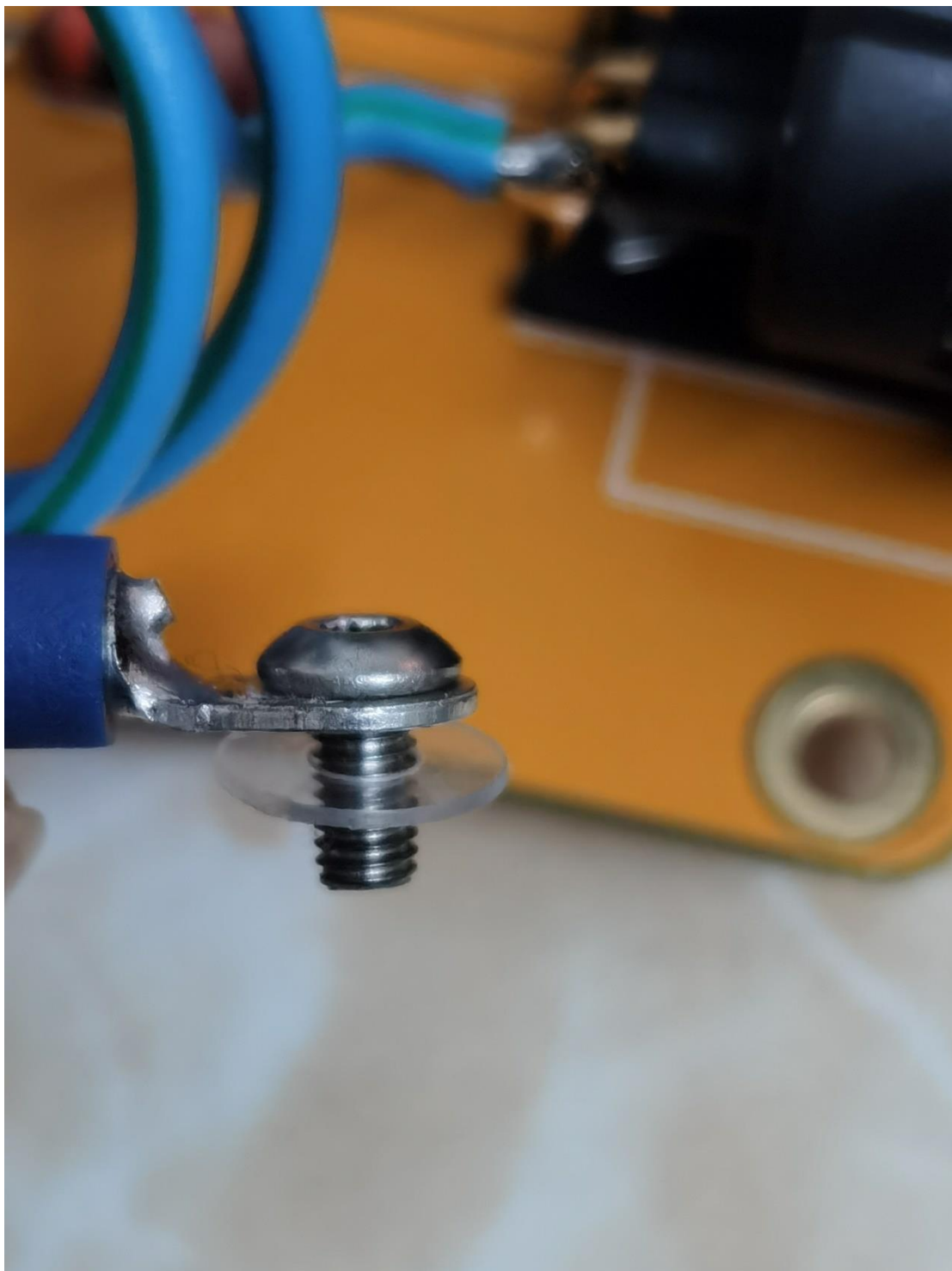


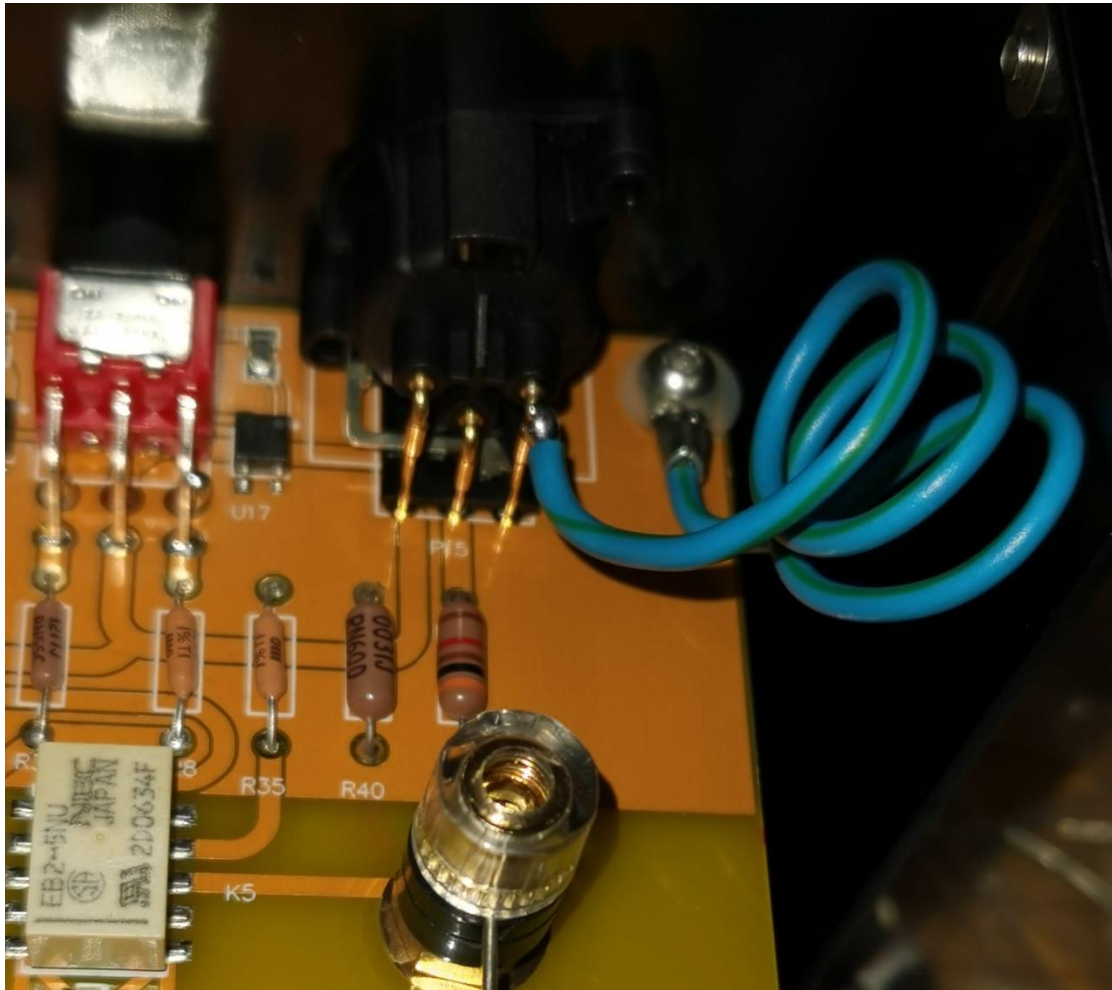
Use the plastic screw and insulation washer underneath for the center front screw hole.



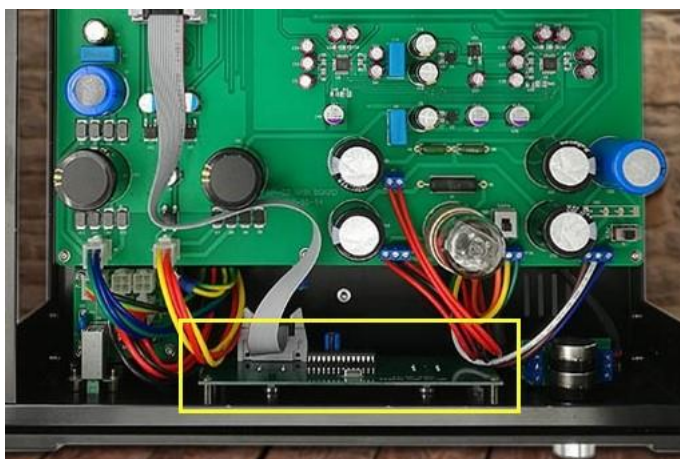


Install the new grounding wire according to the following photo. Don't forget the insulation washer. This ground wire needs to be at least 15CM long. Don't shorten it.





7. If you have MK1 or MK2 version of MP-D2, you also need to swap the front MCU module board to the supplied new one. MK3 users can skip this step.



8. Existing MK3 users should update the firmware to the latest version posted under the end of MP-D2 MK3 product page.
9. There two major changes need to be noted. First, the OPTI input becomes Bluetooth

APTX HD input now. You need to install the antenna coming with the new motherboard. Second, signal tubes working point(curve) has been changed and optimized. The gain settings have also been improved to avoid excessive gain when using 6922 types of tubes. Now, when using stock 6H6, 6H30pi and 12AU7 tubes, you need to set both gain switches at the back to H position. These tubes are suitable for RCA outputs signal level. When using 6922/E88CC/6DJ8 tubes, you need to set both gain switches to L position for RCA outputs. If you use XLR output, you should usually set the gain switches to H position.

10. Thank you so much for your support and hard work. Enjoy!